

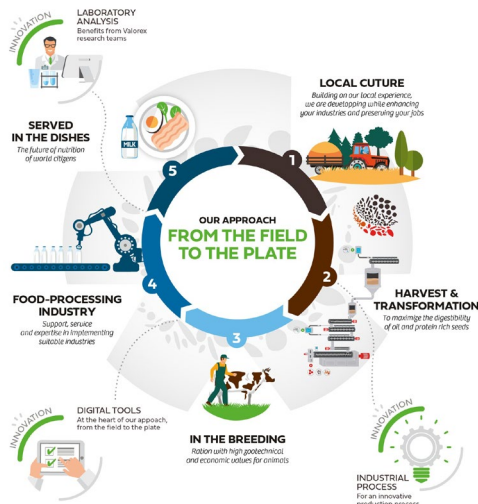
# XVII EAAE CONGRESS

AGRI-FOOD SYSTEMS IN A CHANGING WORLD:  
CONNECTING SCIENCE AND SOCIETY

**AUGUST 29<sup>TH</sup> - SEPTEMBER 1<sup>ST</sup> 2023**  
**RENNES, FRANCE**



## VISIT THE FARM-TO-FORK MODEL BY VALOREX AND BLEU-BLANC-COEUR AND THE FOUGERES CASTLE Study Tour 07 (ST07)



### Valorex



Managing Director: Stéphane Deleau

For 30 years, Valorex is deploying the extraordinary natural potential of local production and transformation of linseed and protein-rich seed.

La Messayais, 35210 Combourtille  
[contact@valorex.com](mailto:contact@valorex.com)

During the visit of our plant, you will discover our organization to deploy this farm to fork model by Valorex and Bleu-Blanc-Coeur, with our scientific base, state recognition, obligation of means and results all along the food chain. Of course, you will visit our industrial plant from the supply of our raw materials to the original industrial process. You will also be able to taste food products from the Bleu-Blanc-Coeur nutritional food chain.

Today, Valorex puts its know-how and its original economic model at the service of all agricultural actors, to improve human nutrition, animal health and environmental impacts. The development of the Bleu-Blanc-Coeur label for 20 years, is a proof of economic concept based on a new agricultural and food model.

Capacity to accommodate: 20

Information to know: Comfortable shoes are recommended for the visit of Valorex

Lunch: a packed meal will be offered before the departure

Contact persons:

[remi.avignon@inrae.fr](mailto:remi.avignon@inrae.fr)

[julia.denantes@agrocampus-ouest.fr](mailto:julia.denantes@agrocampus-ouest.fr)

**Bus n°: 5**

Starting place: **Rue de Juillet, Rennes**

Starting hour in Rennes: **2:00 pm**

Duration of the visits: 3h (around 1h30 each)

Arrival times in Rennes: 7:30 pm